



# GMT MONTHLY MEMBERSHIP PROGRESS REPORT

Results as of: 3/31/2017

Multiple District 2

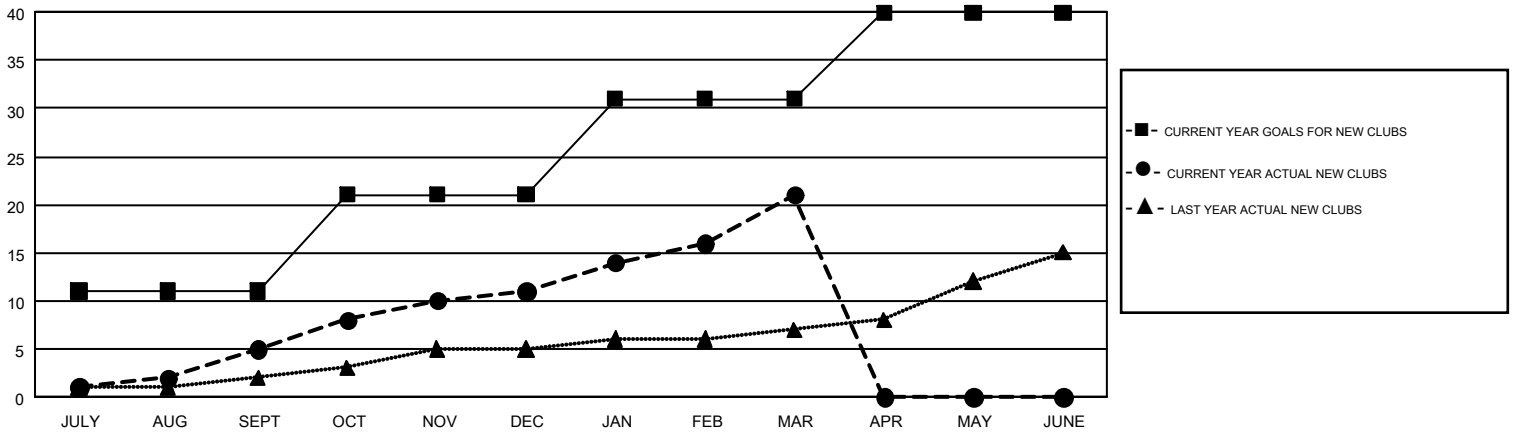
LOCATION: TEXAS

GMT: HAL GRIFFIN

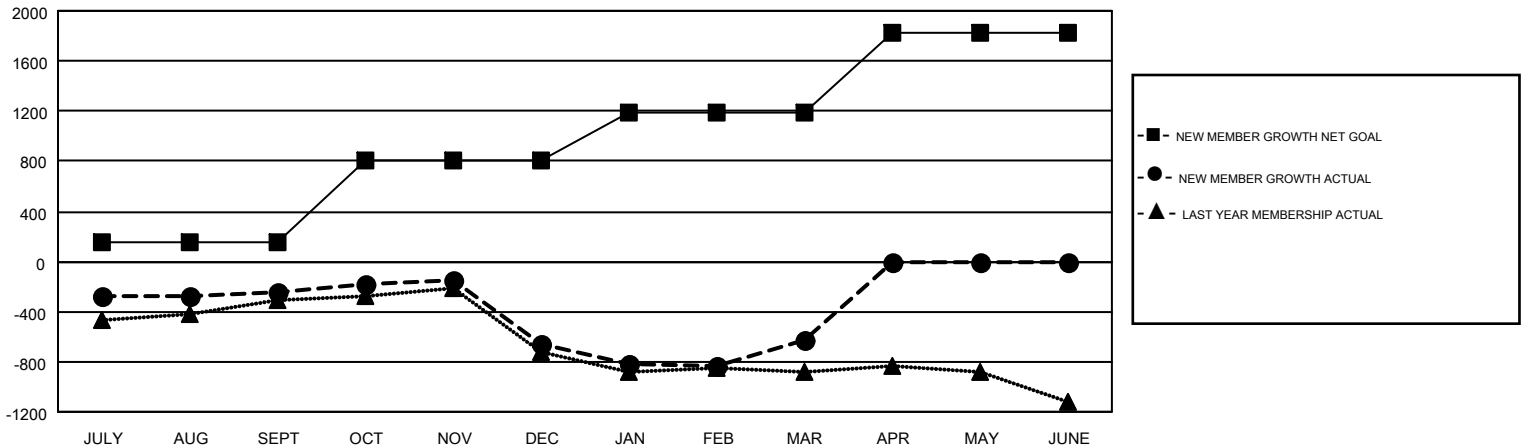
GMT CA 1

Clubs				Members			
RESULTS FOR 2016-2017				RESULTS FOR 2016-2017			
QUARTER	NEW CLUB GOAL	NEW CLUBS	DROPPED CLUBS	QUARTER	NEW MEMBER GROWTH NET GOAL (not reinstated or transfers)	NEW MEMBER GROWTH ACTUAL (not reinstated or transfers)	DROPPED MEMBERS ACTUAL (including transfers)
JULY/AUG/SEPT	11	5	9	JULY/AUG/SEPT	156	958	1,209
OCT/NOV/DEC	10	6	15	OCT/NOV/DEC	650	875	1,277
JAN/FEB/MAR	10	10	5	JAN/FEB/MAR	383	1,140	1,117
APR/MAY/JUNE	9	0	0	APR/MAY/JUNE	638	0	0

GOALS AND ACTUAL NEW CLUBS CUMULATIVE



GOALS AND ACTUAL MEMBERS CUMULATIVE



DROPPED CLUBS: 29	575 CLUBS OF 891 ADDED 1 OR MORE NEW MEMBERS	<b>GENDER DISTRIBUTION</b> MALE 16,602 (65.95%) FEMALE 8,571 (34.05%)
<b>DROPPED MEMBERS</b> DECEASED 232 CLUB CANCELLED 213 OTHER 3,157 <b>TOTAL 3,602</b>	<a href="#">CLICK HERE FOR CUMULATIVE MEMBERSHIP DATA</a>	TOTAL FAMILY UNIT MEMBERS 3,647 FAMILY MEMBERS PAYING HALF DUES 1,859